

# State Report Outs

**RRT5** 





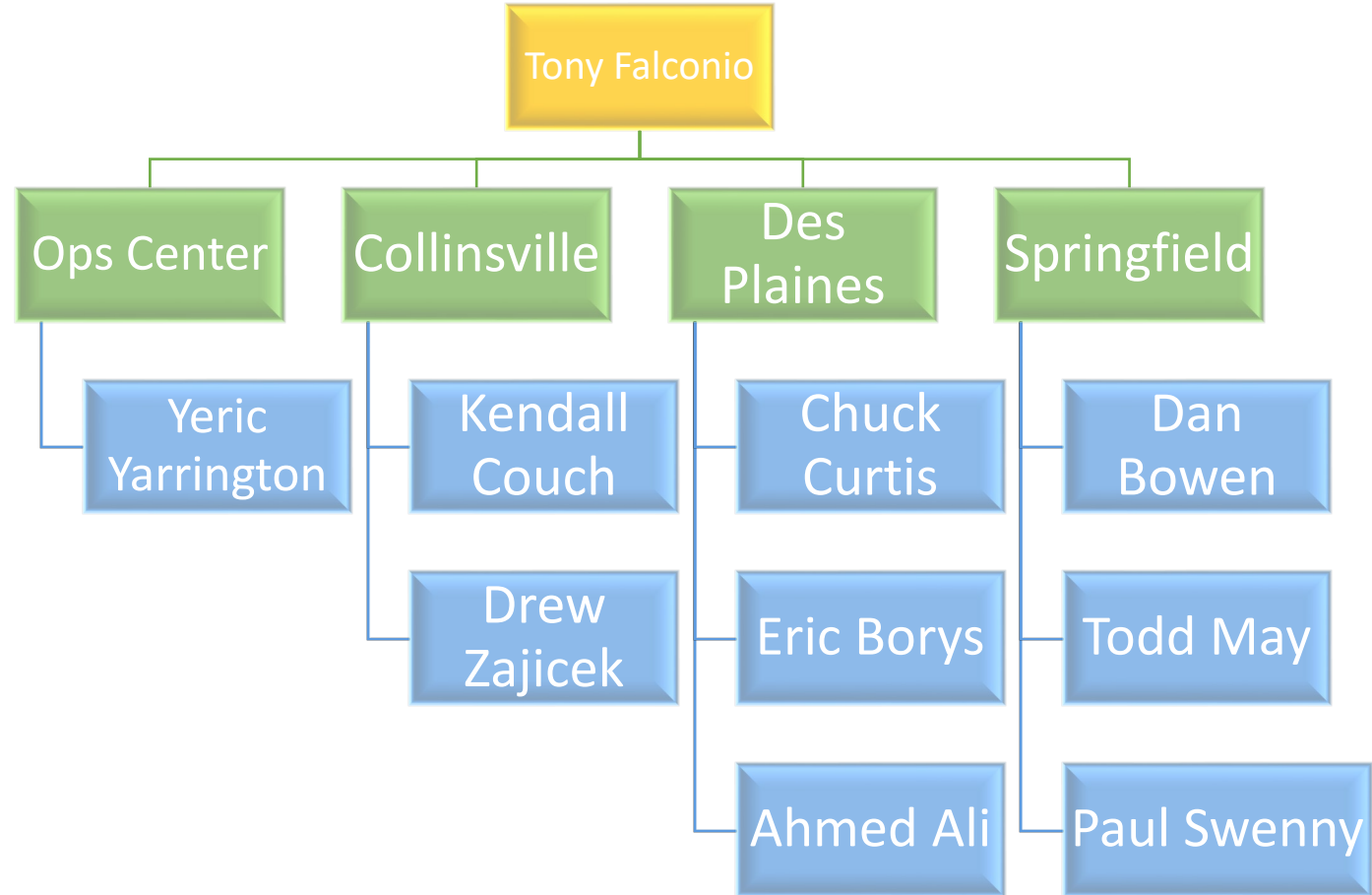
Role	RRT Member	Agency	Contact Info
Primary	Tony Falconio	IEPA	217-900-0492 Tony.Falconio@illinois.gov
Alternate	Yeric Yarrington	IEPA	217-306-3550 Yeric.Yarrington@illinois.gov

# Overview

## Priorities

- Communicate with citizens & responsible parties about releases & associated concerns to ensure proper mitigation & cleanup
- Coordinate with federal, state & local partners in planning for & responding to large spills & disasters

# Agency Organization Chart





# Accomplishments

Since last RRT meeting  
31 Mar 2021

Federal, state, and local Planning and Coordination Efforts		
Description	Location	Dates
Multiple LEPC Meetings	Statewide	
Multiple IEMA Regional Meetings	Statewide	
City of Madison TTX	Madison, IL (Metro-East)	Aug. 30
IEMA Training Summit	Springfield, IL	Sept. 6-8
Argonne National Lab TTX	Chicago	Aug. 2
IPRA Exercises	Statewide	

# Outlook

Until Next RRT meeting  
22-23 Mar 2022

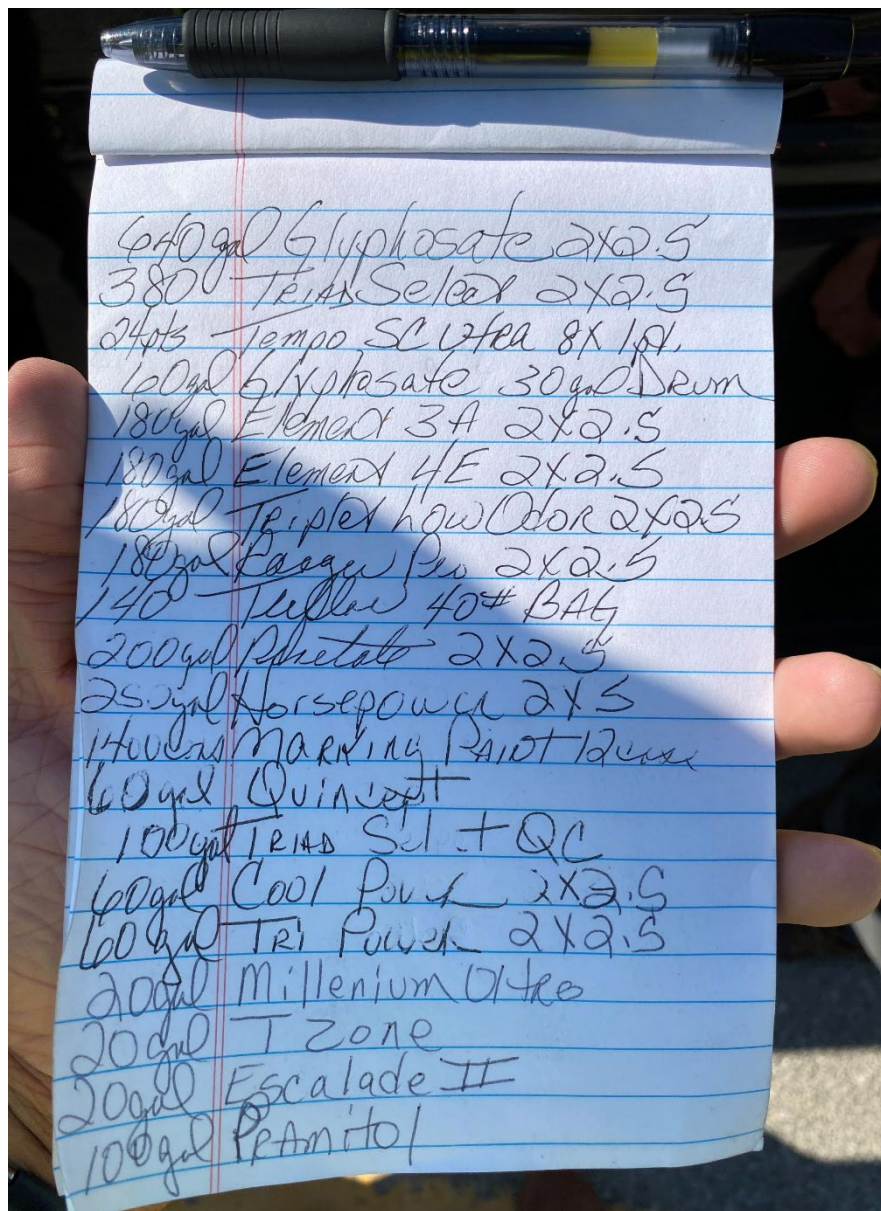
Federal, state, and local Planning and Coordination Efforts		
Description	Location	Dates
River Recon Project	St. Louis Sub-Area	Fall 2022

<b>Name of Incident</b>	<b>Shorewood Fertilizer Fire</b>
<b>Location</b>	<b>Shorewood, IL (Will County)</b>
<b>OSCs Responding</b>	<b>Ahmed Ali and Eric Borys</b>
<b>Date</b>	<b>7/19/2022</b>
<b>Type and Amount of Product Spilled</b>	<b>Multiple pesticides, herbicides, etc</b>
<b>Cause of Spill</b>	<b>Fire</b>
<b>Key Operational Activities</b>	<b>Multijurisdictional coordination Smoke Plume Water Runoff</b>
<b>Agencies Involved</b>	<b>IEPA, USEPA, START, County and Local Government</b>
<b>Major Lessons Learned</b>	<b>Pre-incident meetings to educate roles and responsibilities</b>

# Incident Photos











Search here



E



3

4  
5520 W Black Rd  
Recently viewed

5

Alden Estates  
of Shorewood

2

W Black Rd

N River Rd

W Black Rd

W Black Rd

6

7

8

9

10, 11

Creek

River



Explore



Go



Saved



Contribute



Updates

Google

<b>Name of Incident</b>	<b>Albers Train Derailment</b>
<b>Location</b>	<b>Albers, IL (Clinton County)</b>
<b>OSCs Responding</b>	<b>Tony Falconio and Drew Zajicek</b>
<b>Date</b>	<b>9/19/2022</b>
<b>Type and Amount of Product Spilled</b>	<b>Methyl Methacrylate</b>
<b>Cause of Spill</b>	<b>Derailment from unknown cause</b>
<b>Key Operational Activities</b>	<b>Multijurisdictional coordination Plume Land Contamination</b>
<b>Agencies Involved</b>	<b>IEPA, USEPA, NGOs and Local Government</b>
<b>Major Lessons Learned</b>	<b>Methyl Methacrylate is thin and will seep into ground to great depths</b>























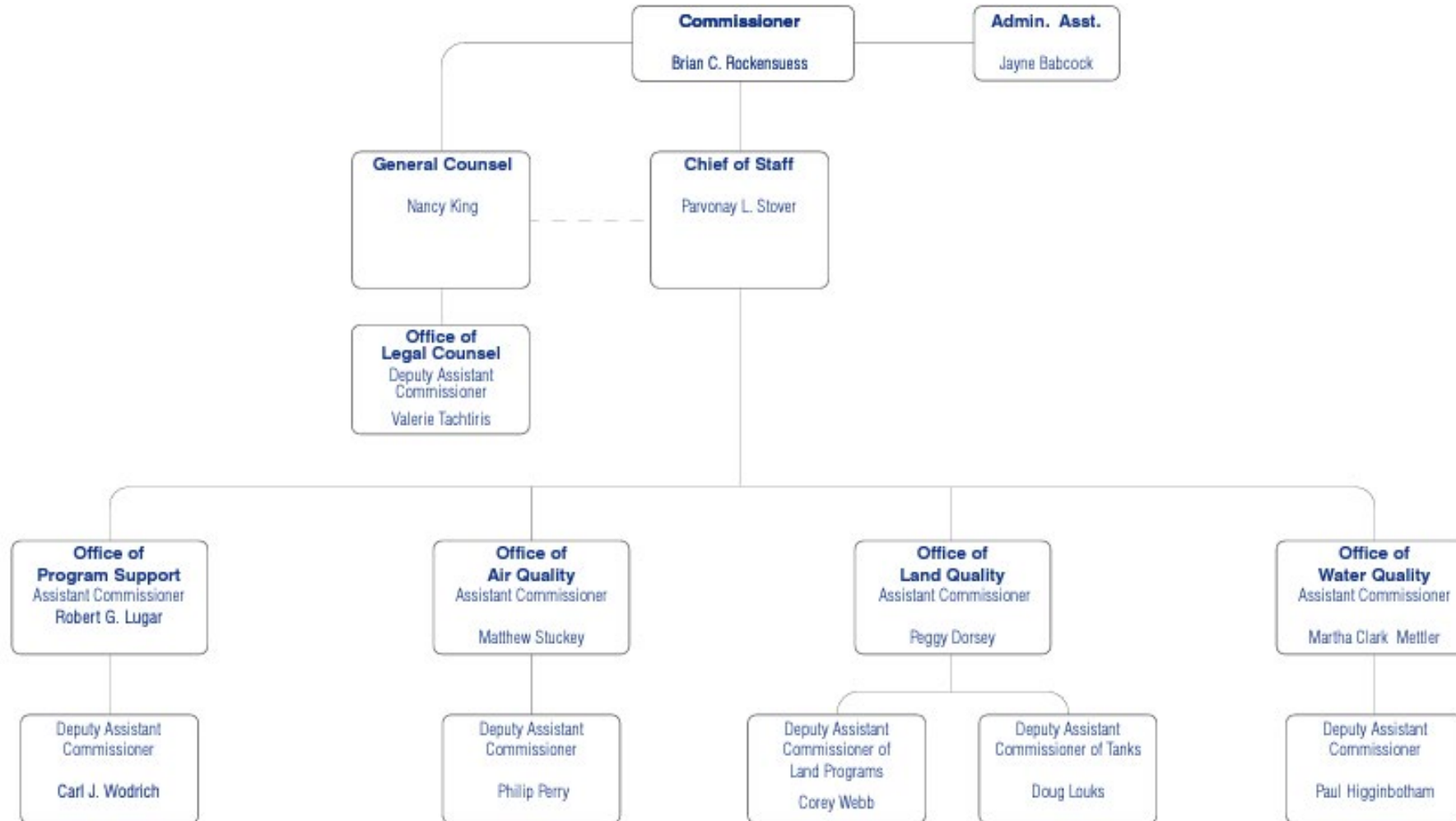
Role	RRT Member	Agency	Contact Info
Primary	Aaron Green, Section Chief	Indiana Dept. of Environmental Management (IDEM)	(317)308-3049 office (317)691-6417 cell <a href="mailto:agreen2@idem.IN.gov">agreen2@idem.IN.gov</a> b
Alternate	Doug Louks, Deputy Assistant Commissioner	Indiana Dept. of Environmental Management (IDEM)	(317)234-5344 office (317)519-7794 cell <a href="mailto:dlouks@idem.IN.gov">dlouks@idem.IN.gov</a>



# Overview

- IDEM Agency Staffing – Approximately 750
- Emergency Response Section – Fully Staffed
- Governor Holcomb – Statewide Employee Retention and Recruiting Initiative
- Indiana PFAS Foam Collection Initiative – Partnership with IDEM, Indiana Department of Homeland Security, and State Fire Marshal
  - ❖ Overall project completion 75%
  - ❖ 20,834 gallons of AFFF collected from 155 sites

# IDEM Agency Organization Chart (Executive Staff)



# Laws/Regulations/Policies

- [Risk-based Closure Guide, dated July 8, 2022](#)
  - ❖ Non-rule policy for site remediation: characterization, risk evaluation, and remedy selection and implementation.
  - ❖ Supersedes Risk Integrated System of Closure (RISC), dated March 22, 2022



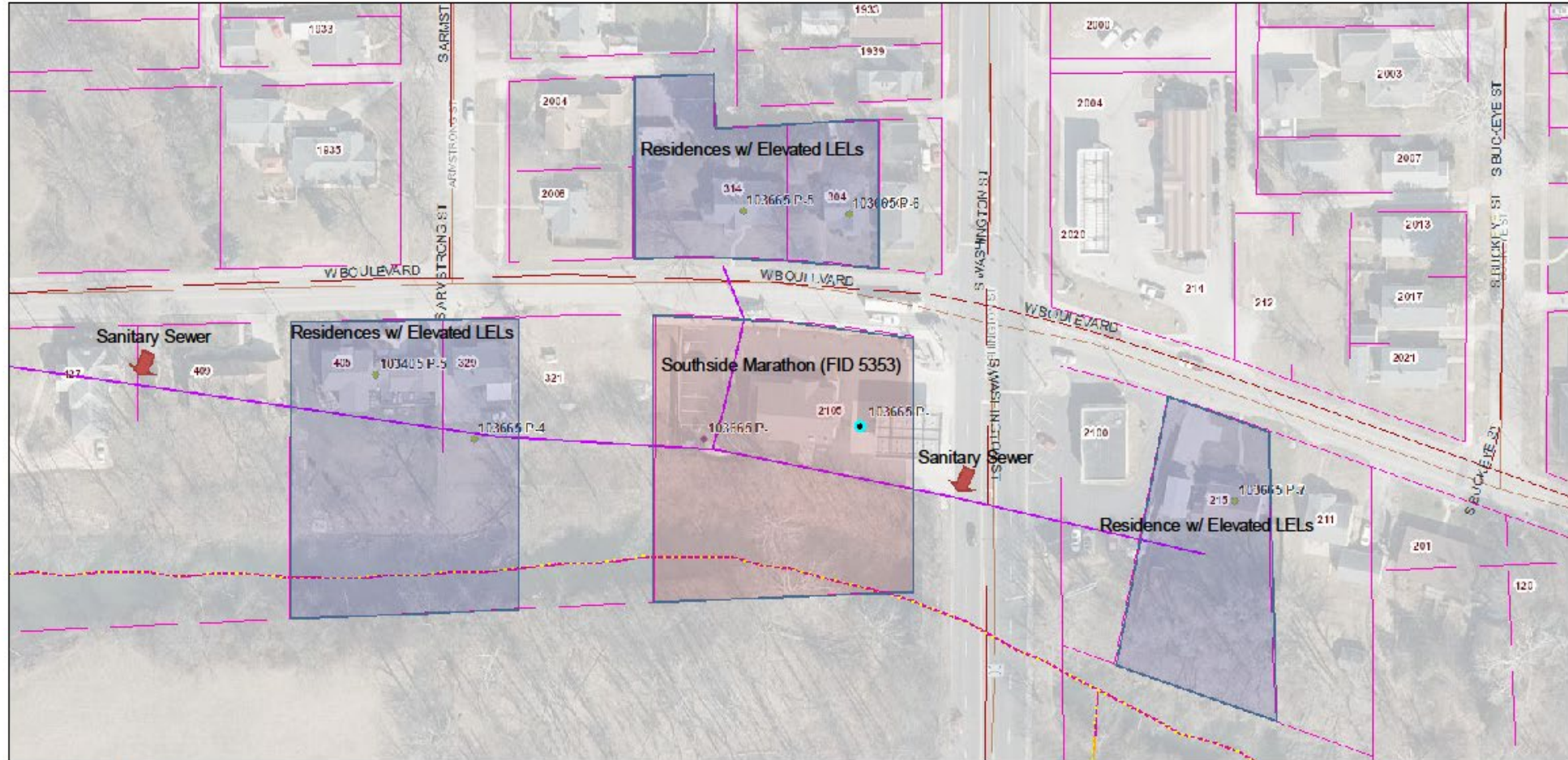
# Accomplishments

Since last RRT meeting  
31 Mar 2021

Federal, state, and local Planning and Coordination Efforts		
Description	Location	Dates
Patoka River Wildlife Refuge, Sub-area Plan	Southwest Indiana	ongoing
White River, Sub-area Plan	Central Indiana	ongoing
Northwest Indiana, Sub-area Plan	Northwest Indiana	ongoing
Kentuckian Ohio River, Sub-area Plan	Southern Indiana	ongoing
Multi-Rae Training w/ USEPA OSC Jason Sewell	Indianapolis	October 5, 2022
USEPA Coordinated - A Calamity in Columbus Tabletop Exercise	Columbus, IN	August 24, 2022
Continued Development IDEM ER UAV Program	Statewide	ongoing

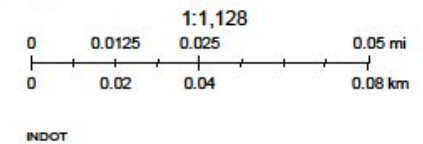
<b>Name of Incident</b>	<b>LELs in Sanitary Sewer</b>
<b>Location</b>	<b>Kokomo, Indiana</b>
<b>OSCs Responding</b>	<b>IDEM OSC, David Cage</b>
<b>Date</b>	<b>September 23, 2022</b>
<b>Type and Amount of Product Spilled</b>	<b>UST system failure resulting in the release of premium gasoline</b>
<b>Cause of Spill</b>	<p><b>Specific cause is under investigation.</b></p> <p><b>**Speculative but these are first generation fiberglass tanks from 1970 and not rated to hold any level of gasoline with ethanol.**</b></p>
<b>Key Operational Activities</b>	<ul style="list-style-type: none"> <li><b>• Coordinate with first responders (Fire Department) to screen buildings and sewer.</b></li> <li><b>• Ventilation of buildings and sewer</b></li> <li><b>• Source identification and control</b></li> </ul>
<b>Agencies Involved</b>	<b>Kokomo Fire Department, Kokomo Sanitary District, IDEM Emergency Response, UST Compliance, Wastewater Compliance, Howard County EMA and CoHD</b>
<b>Major Lessons Learned</b>	<ul style="list-style-type: none"> <li><b>• Protection of Human Health Top Priority</b></li> <li><b>• Simple abatement strategies are often best: intrinsically safe ventilation, replacement of solid sewer manhole covers with storm gates, flushing, and monitoring of WWTP</b></li> </ul>

# IDEM ER Map - Gasoline UST Release, Kokomo, Howard Co. (RM 103665)



9/26/2022, 2:25:09 PM

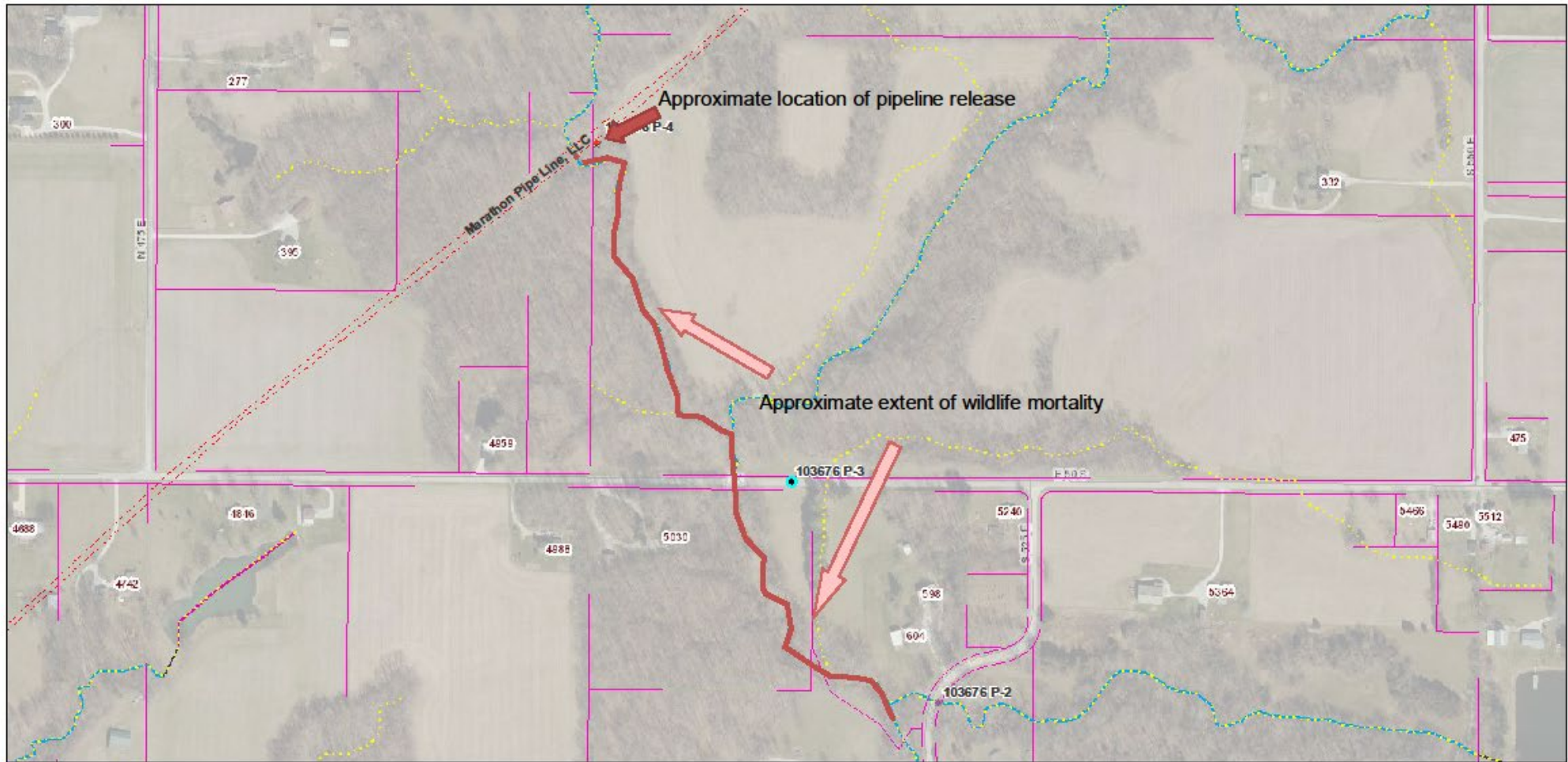
- |   |   |  |  |  |   |
|---|---|--|--|--|---|
| <b>Areas</b>  | <ul style="list-style-type: none"> <li>General Observation</li> <li>Field Screening</li> </ul>  | <b>Surface Water</b>   | <ul style="list-style-type: none"> <li>Interchanges</li> <li>Reference Post</li> <li>Bridge Point</li> <li>Toll Road</li> <li>Ramps</li> <li>Interstate</li> </ul> | <ul style="list-style-type: none"> <li>US Routes</li> <li>US Highways-Other</li> <li>State Routes</li> <li>State Routes-Other</li> <li>County Roads</li> <li>City Streets</li> </ul> | <ul style="list-style-type: none"> <li>County Boundary</li> <li>Red: Band_1</li> <li>Green: Band_2</li> <li>Blue: Band_3</li> </ul> |
| <ul style="list-style-type: none"> <li>Override 1</li> <li>Override 2</li> <li>Override 3</li> <li>Counties - GIS Links</li> <li>ER Field Notes (Points)</li> <li>Spill Source</li> </ul> | <ul style="list-style-type: none"> <li>ER Field Notes (Lines)</li> <li>Area of Concern</li> <li>Surface Water Flow Direction</li> <li>Flow Direction</li> </ul> | <ul style="list-style-type: none"> <li>ArtificialPath</li> <li>CanalDitch</li> <li>Streets (Polis/I/GIO, 20210102)</li> <li>Address</li> <li>Parcel</li> </ul> |  |  |   |



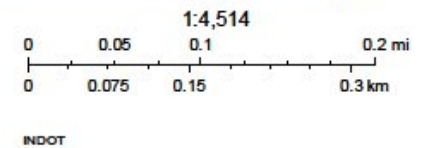
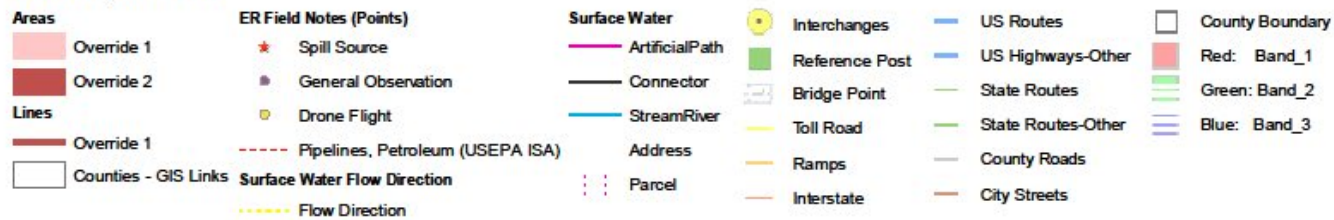
<b>Name of Incident</b>	Marathon Pipeline Release (EPA Polrep <a href="#">Marathon Putnam Response</a> )
<b>Location</b>	Fillmore, IN
<b>OSCs Responding</b>	USEPA OSC Jason Sewell, IDEM OSC Brian Smith, Ethan Ehler, & Scott Frosch
<b>Date</b>	Sept 26, 2022
<b>Type and Amount of Product Spilled</b>	Natural Gasoline – A Liquid petroleum hydrocarbon condensate. Original reported of 10 barrels released has since been revised to 495 barrels
<b>Cause of Spill</b>	Under investigation. Release from a dime-sized hole at the underside of an 8” pipeline at girth weld.
<b>Key Operational Activities</b>	<ul style="list-style-type: none"> <li>• Air monitoring for hazardous atmospheres</li> <li>• Product containment and recovery from creek</li> <li>• Source removal</li> <li>• Natural resource damage assessments</li> </ul>
<b>Agencies Involved</b>	IDEM, USEPA, Putnam Volunteer Fire Department, Putnam County EMA and CoHD, PHMSA, Indiana DNR
<b>Major Lessons Learned</b>	Natural gasoline poses unique and acute hazards: Immediate mortality of wildlife; and hazardous atmospheres. Cellular limitations in rural settings.



# IDEM ER Map - Marathon Pipeline Natural Gasoline Release, Fillmore, Putnam County (RM 103676)



9/26/2022, 4:08:01 PM





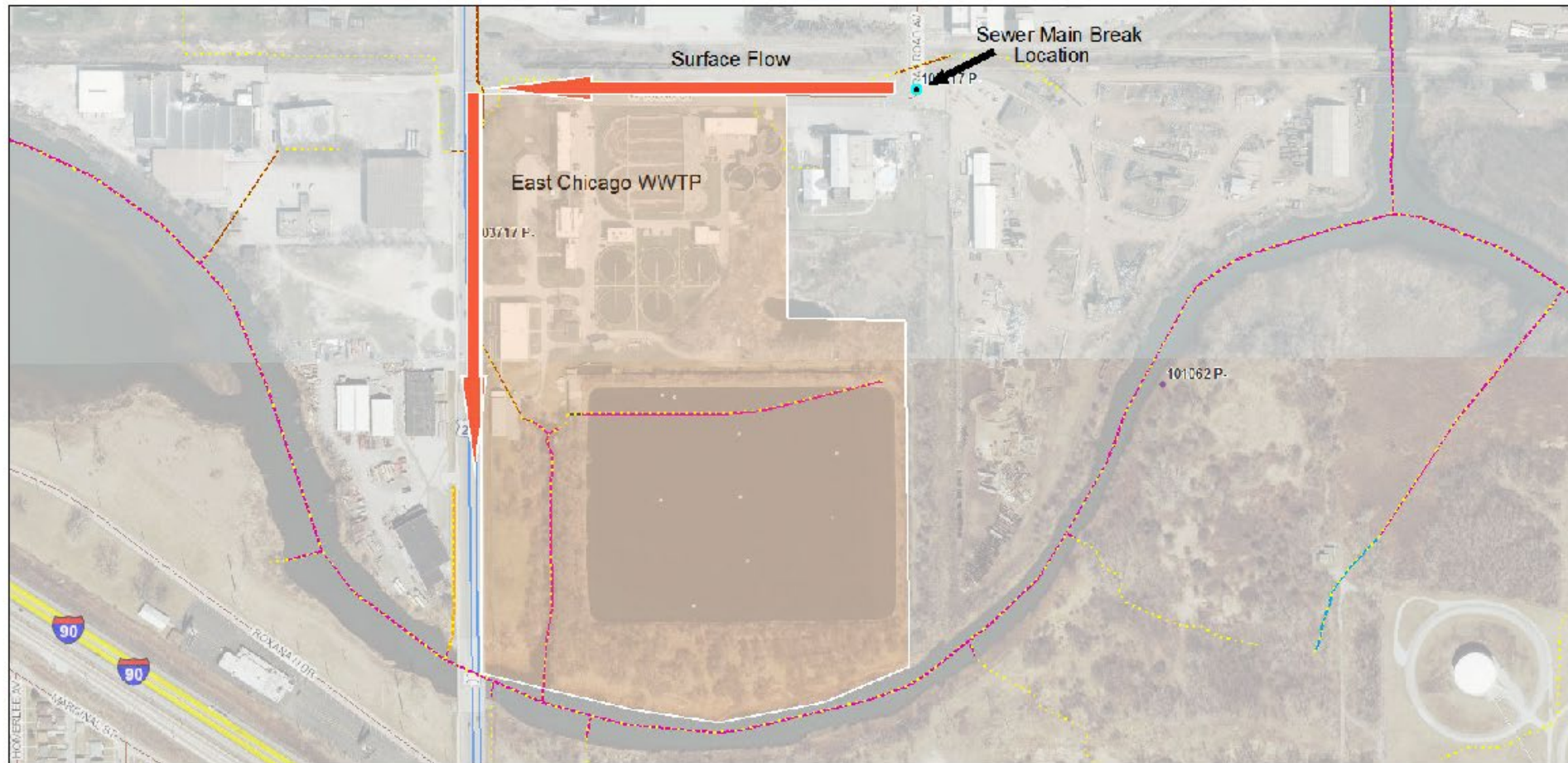
# Incident Photos – Marathon Pipeline Release



<b>Name of Incident</b>	<b>East Chicago Force Main Sewer Break</b>
<b>Location</b>	<b>East Chicago, Lake County</b>
<b>OSCs Responding</b>	<b>IDEM OSC David Greinke and Fawn Patterson provide support of IDEM's Wastewater Compliance</b>
<b>Date</b>	<b>September 28, 2022</b>
<b>Type and Amount of Product Spilled</b>	<b>Force main sewer break results in 7-8 MGD of sanitary sewage being discharged to the Grand Calumet River. Repairs are underway, but discharge will continue until repair is complete.</b>
<b>Cause of Spill</b>	<b>Break of 42" force main which conveys approximately 80% of the City's capacity. A semi-truck and trailer collapsed into a sink hole rupturing sewer main.</b>
<b>Key Operational Activities</b>	<ul style="list-style-type: none"> <li>• <b>Reduce flow through voluntary actions by industrial users</b></li> <li>• <b>Installation of large capacity diesel pumps to divert flow</b></li> <li>• <b>Source contractors and parts for repair</b></li> <li>• <b>Notify downstream users</b></li> </ul>
<b>Agencies Involved</b>	<b>IDEM, USEPA, East Chicago Sanitary District</b>
<b>Major Lessons Learned</b>	<b>Importance of early regulatory involvement to help establish objectives through compliance and enforcement authorities.</b>

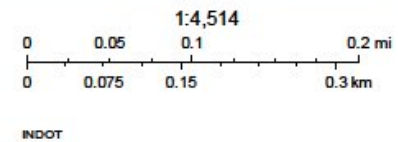


# IDEM ER Map - East Chicago Sewer Main Break (RM 103717)



9/28/2022, 4:18:37 PM

Areas	Surface Water Flow Direction	Stream/River	Interstate	City Streets
Override 1	Flow Direction	Interchanges	US Routes	County Boundary
Override 2	Surface Water	Reference Post	US Highways-Other	Red: Band_1
Override 3	Artificial Path	Bridge Point	State Routes	Green: Band_2
Counties - GIS Links	Canal/Ditch	Toll Road	State Routes-Other	Blue: Band_3
ER Field Notes (Points)	Connector	Ramps	County Roads	
General Observation	Pipeline			



IDEM OSC  
IDEM Emergency Response  
North Direction ^



# Incident Photos – East Chicago Sewer Main Break





MICHIGAN DEPARTMENT OF  
ENVIRONMENT, GREAT LAKES, AND ENERGY

Role	RRT Member	Agency	Contact Info
Primary	Jay Eickholt	EGLE	517-256-4408 EickholtJ1@michigan.gov
Alternate	TBD		Phone Email
Primary			Phone Email
Alternate			Phone Email

# Overview

- Almost 1,300 employees now.
- Added 2 new Incident Management Specialists.
  - Ashley Miller in the Marquette/ U.P. office
  - Melissa Powers-Taylor in Jackson (South Central) office
- Remain hybrid for in-person work.
- New state budget boilerplate language requiring the department to notify elected officials when a “Significant Event” happens in the state.
- Since January 1, have had 1,900 PEAS reports

# Events of Significance

Event Name	Description	Location	Dates
Avian Influenza	Detection of backyard and commercial flock in MI. Resulted in on-site composting of carcasses. EGLE did not support a waiver for BODA, and provided a list of environmental health concerns that sites must address	Statewide.	Mid-May - Present
EGLE Environmental Emergency Response Conference	First time EGLE held an emergency preparedness and response conference in Michigan. About 300 attendees. Not intending to be a annual event.... Come to No-Spills	Lansing, MI	June 29 and 30
Lockhart Chemical Sludge Release	Underground catch basin was collecting chemical overflows and residuals for decades. There was a crack in this basin which led to infiltration into the storm sewer and discharge to the Flint River.	Flint, MI	Mid-June - July

# Events of Significance

Event Name	Description	Location	Dates
Tribar/Wixom WWTP HexChrome Release	Release from the facility through onsite waste water process and to the municipal WWTP.	Wixom, MI	July 30 – Sept 15
St. Clair River/ Sarnia Release	Release of petroleum product and waste water from Sarnia, MI. No verified quantities known, sheen was mostly on Canadian side of the river. County EM's had more information than EGLE did. Drinking water plants shutdown intakes at initial onset, restarted, and were asked by EGLE the next day to shut down intakes again due to a sheen that had not dissipated yet.	St. Clair, MI	Mid-August

# Events of Significance

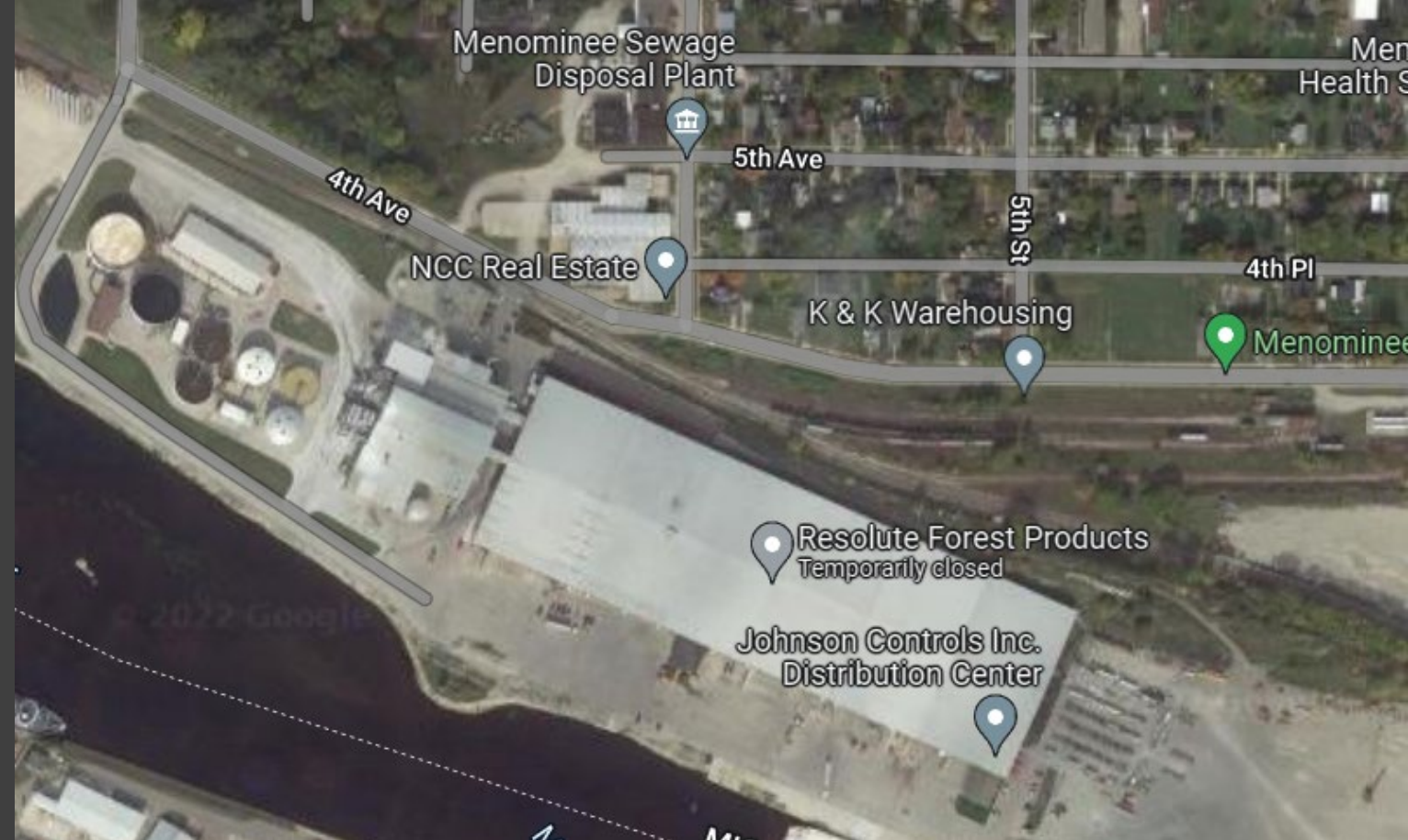
Event Name	Description	Location	Dates
Resolute/ Menominee Fire	<p>Fire began at paper facility at west end of a commercial warehousing complex, spread to neighboring facility that manufactures AFFF. Substantial fire response, mobilized FD's from across MI to support and backfill. EPA mobilized OSC's, START contractors, EGLE and our contractors, facility contractors. Fire continues to burn, release to Menominee River from firefighting water and chemicals. Surface water and drinking water sampling, collection pond built to contain up to 25,000 gallons per minute of water that was going to be applied.</p> <p>Ongoing response.</p>	Menominee, MI	October 7





Lockhart — Flint, MI





# Resolute/ Menominee Fire





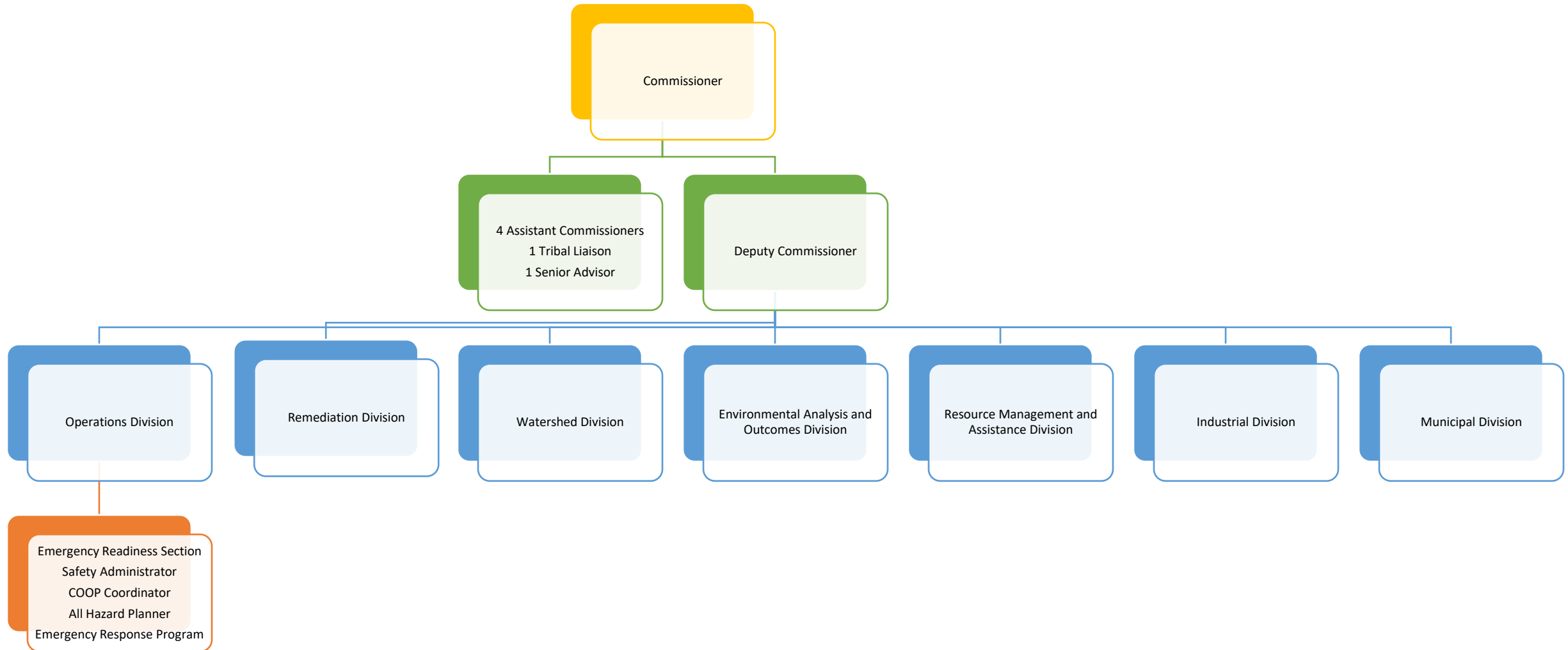
Role	RRT Member	Agency	Contact Info
Primary	Ryan Ricci	MN Pollution Control Agency	651-757-2650 ryan.ricci@state.mn.us
Alternate	Dorene Fier-Tucker	MN Pollution Control Agency	651-757-2161 dorene.fier-tucker@state.mn.us

# Overview of Current Focus Items

- Improving internal preparedness: updated SOPs, exercises and training.
- Training new responders and hydrologist
- Adapting to teleworking, entire program is 100% telework
- Fulfilling our railroad preparedness mandates
- Developing guidance for AFFF spills/releases
- Developing a contract to fill our air response needs
- Developing measures to evaluate the program effectiveness

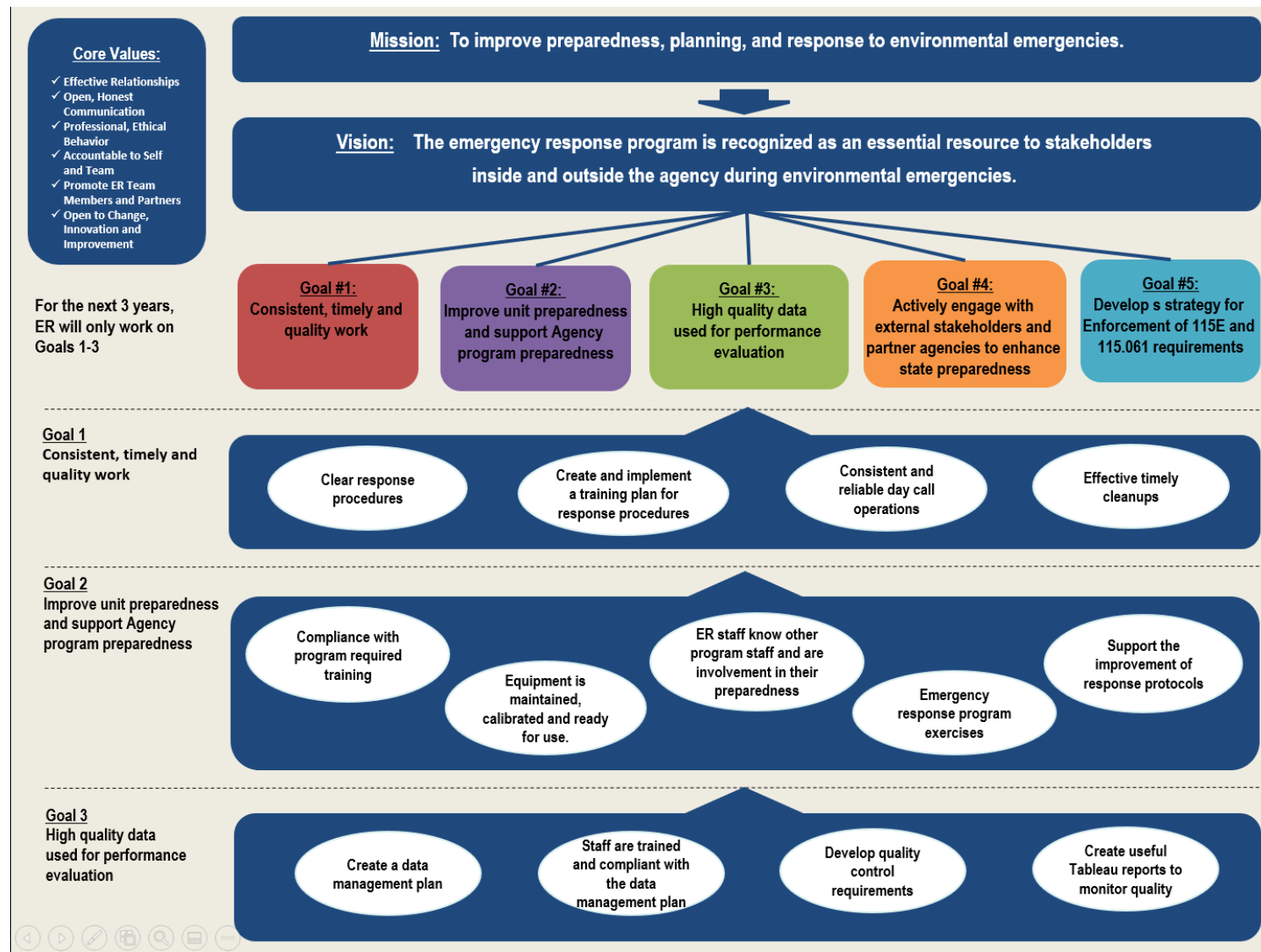


# MN Pollution Control Agency Organization Chart



# Laws/Regulations/Policies

- Updated our Strategic Plan for the program
- Participated in 5 equipment drills and/or exercises with 5 railroads
- Reviewed 5 rail Prevention and Response Plans and preparing our comments





# Accomplishments

Since last RRT meeting 31 Mar 2021

Federal, state, and local Planning and Coordination Efforts		
Description	Location	Dates
Participated in strategic planning and reviewed and commented on updated manual for Upper Mississippi River Basin Association, Hazardous Spills Group	Upper Mississippi River	Numerous
Member and participant of Wakota CAER organization	Washington and Dakota County	Monthly meetings
Member and participant in MN State Agency Haz Mat Meetings	Statewide	Quarterly
Conduct monthly collaboration meetings between MPCA and State Fire Marshal's Office	St. Paul	Monthly
Member and participant in the following: Western Lake Superior Port Area Committee, Siouxland Sub-Area Committee, Twin Cities Sub-Area Committee and Red River Sub-Area Committee	Varies	Varies by Committee

# Outlook

Until Next RRT meeting  
22-23 Mar 2022

Federal, state, and local Planning and Coordination Efforts		
Description	Location	Dates
Same as past		



<b>Name of Incident</b>	<b>U of M Sewer Explosion</b>
<b>Location</b>	<b>Minneapolis</b>
<b>OSCs Responding</b>	<b>Mark Smith, Jason Moran, Michael Schulte, Ryan Stafne</b>
<b>Date</b>	<b>June 30, July 12<sup>th</sup>, July 29, August 2<sup>nd</sup> and August 5th</b>
<b>Type and Amount of Product Spilled</b>	<b>Suspect gasoline, diesel and other petroleum products, amount unknown</b>
<b>Cause of Spill</b>	<b>Suspect problem with discharge at permitted waste recycling facility</b>
<b>Key Operational Activities</b>	<b>Assist the Metropolitan Council Environmental Services (MCES) with investigation, request facility to stop discharging and recover oil, control the vapor to prevent explosions from occurring. The following MPCA programs assisted: Tanks Compliance, Petroleum Remediation, Hazardous Waste, Municipal and Industrial Wastewater, and Communications.</b>
<b>Agencies Involved</b>	<b>City of Minneapolis, City of St Paul, MCES, MN Department of Public Safety (DPS) State Fire Marshal's Office, DPS Office of Pipeline Safety, MN Department of Health (MDH) and MPCA</b>
<b>Major Lessons Learned</b>	<b>Finding the source of contamination in a 10 foot diameter interceptor sewer is difficult but not impossible. It takes dedicated staff to monitor the sewer frequently and ready to chase the vapors in the sewers. Air flow dynamics within an interceptor and its connections is complex and there are experts in that field. Facility inspections are important.</b>

